

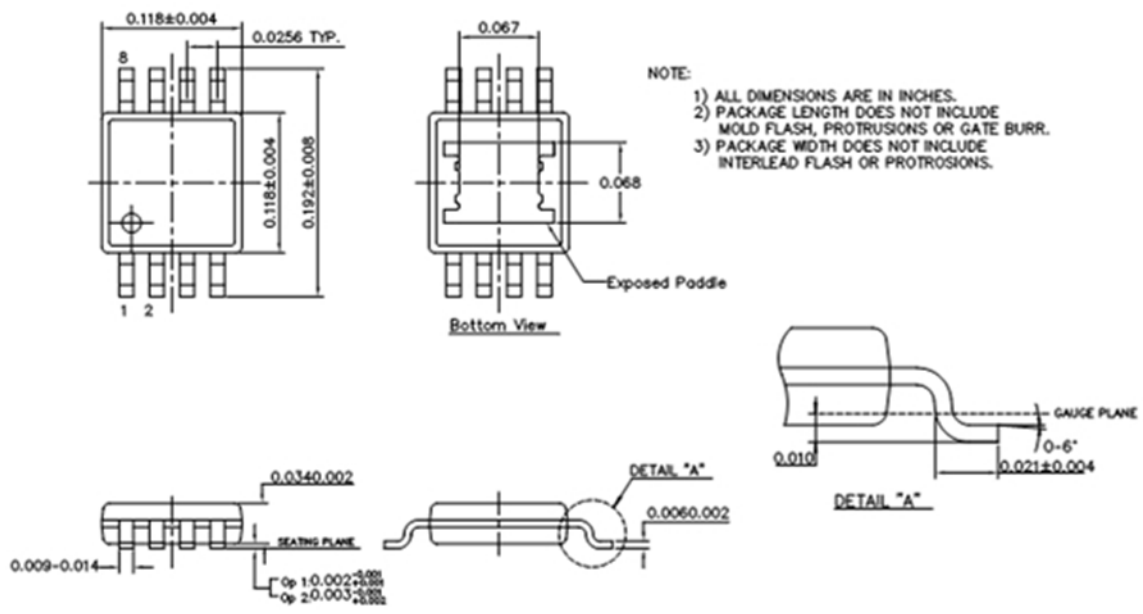
# BSW841



SPDT Switch

DC~4GHz Wide Band Single Pole Double Throw Switch

## Package Outline Drawing



## Truth Table

| Control Voltage |         | Signal Path State |            |
|-----------------|---------|-------------------|------------|
| A (Vdc)         | B (Vdc) | RFC to RF1        | RFC to RF2 |
| 0               | +5      | ON                | OFF        |
| +5              | 0       | OFF               | ON         |