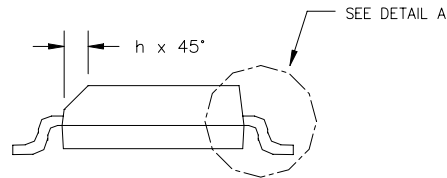
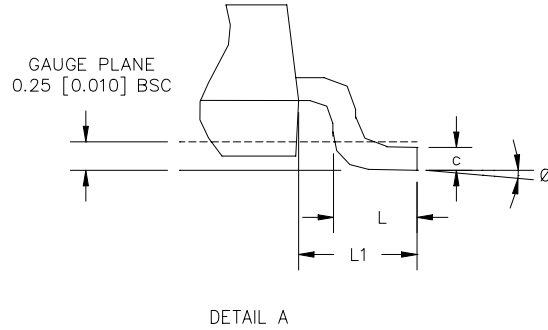
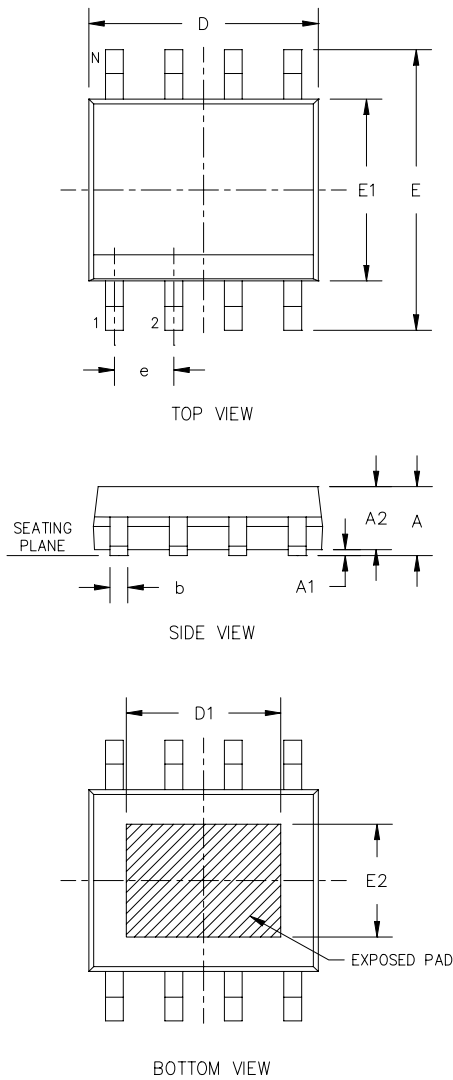


SOIC8 Outline Dimensions

8-pin SOIC8 Outline Dimensions



SYM	DIMENSION IN INCHES			DIMENSION IN MM		
	MIN	NOM	MAX	MIN	NOM	MAX
A	0.056	0.058	0.061	1.42	1.47	1.55
A1	0.001	0.004	0.005	0.025	0.102	0.127
A2	0.051	0.054	0.057	1.30	1.37	1.45
b	0.014	0.016	0.020	0.36	0.41	0.51
c	0.007	0.008	0.010	0.18	0.20	0.25
D	0.191	0.193	0.195	4.85	4.90	4.95
E1	0.151	0.153	0.155	3.84	3.89	3.94
E	0.234	0.240	0.244	5.94	6.10	6.20
e	0.050			1.27		
L	0.020	0.027	0.032	0.51	0.69	0.81
L1	0.042	0.044	0.046	1.07	1.12	1.17
Ø	0*	-	8*	0*	-	8*
h	0.011	0.015	0.019	0.28	0.38	0.48
D1	0.120	-	0.130	3.05	-	3.30
E2	0.085	-	0.095	2.16	-	2.41

NOTES:

1. DIMENSION D DOES NOT INCLUDE MOLD FLASH, PROTRUSIONS OR GATE BURRS. DIMENSION E1 DOES NOT INCLUDE INTERLEAD FLASH OR PROTRUSIONS.
2. COPLANARITY APPLIES TO THE TERMINALS. COPLANARITY SHALL NOT EXCEED 0.003" [0.08 mm].
3. BASED FROM JEDEC MS-012 VARIATION AA.

PIN NO.	FUNCTION
1,3,4,6,7	DC and RF Ground
2	RF Input
5	RF Output 1
8	RF Output 2
Back side ground	Can be used without back side ground soldering